

Current State and Issues of Infrastructure Maintenance in Korea

(ACECC TC-28 Meeting in Mar 2022)



Changsu Shim
Chung-Ang University
Korea



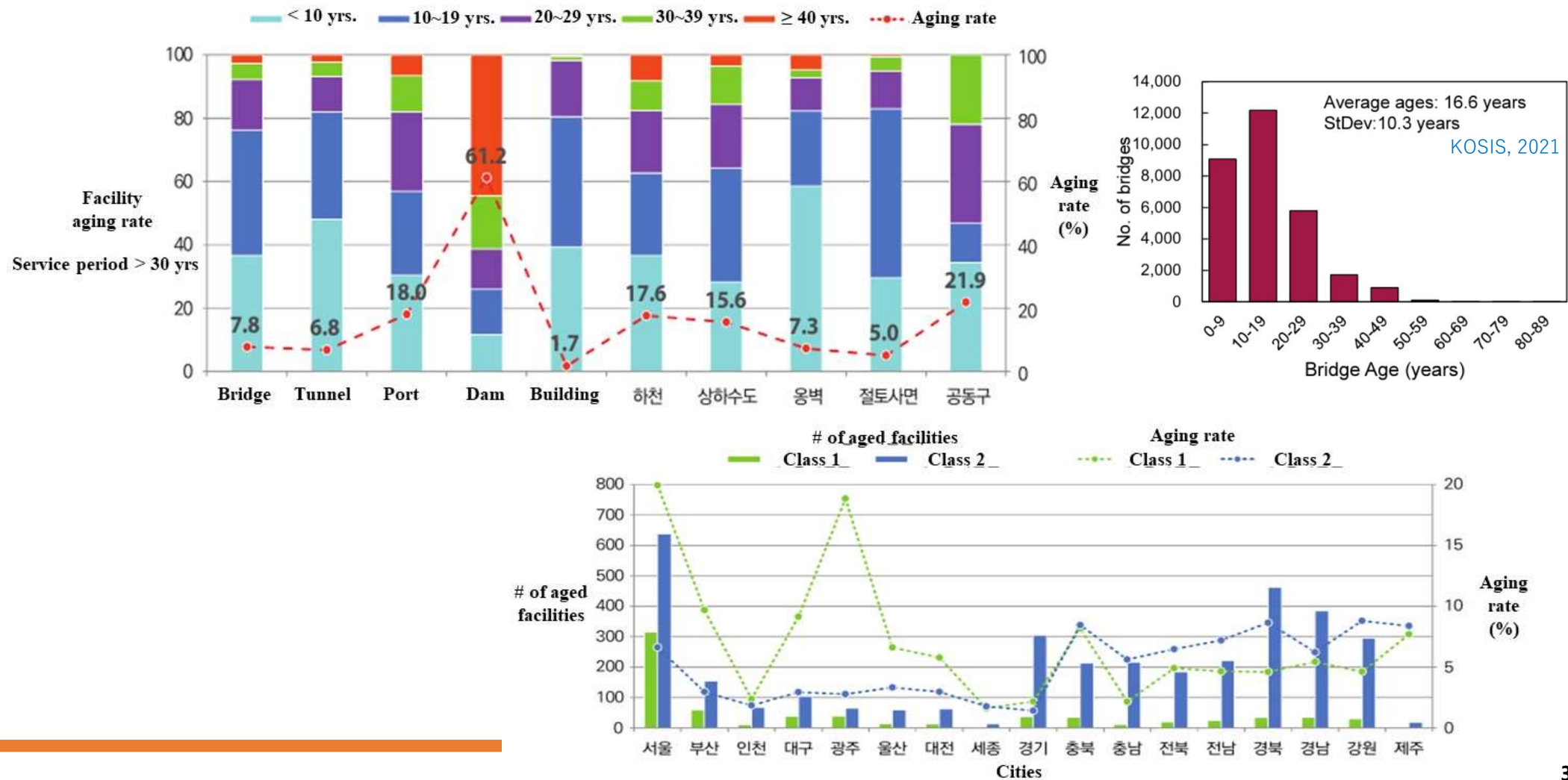
Acecc

For a Better Quality of Life

<http://www.acecc-world.org/>

- 1. Deterioration of Infrastructures in Korea**
- 2. Member-based Data for Bridges**
- 3. Digitalization of Maintenance task**
- 4. Issues of Bridge Maintenance in Korea**

Deterioration of Infrastructures in Korea



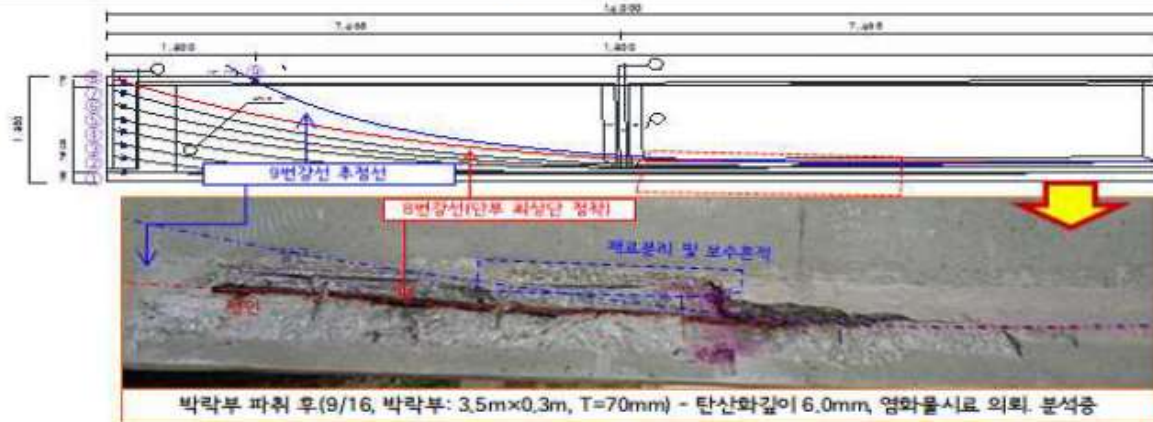
Deterioration of Infrastructures in Korea

- Safety Issue due to Hidden Damages of Bridges



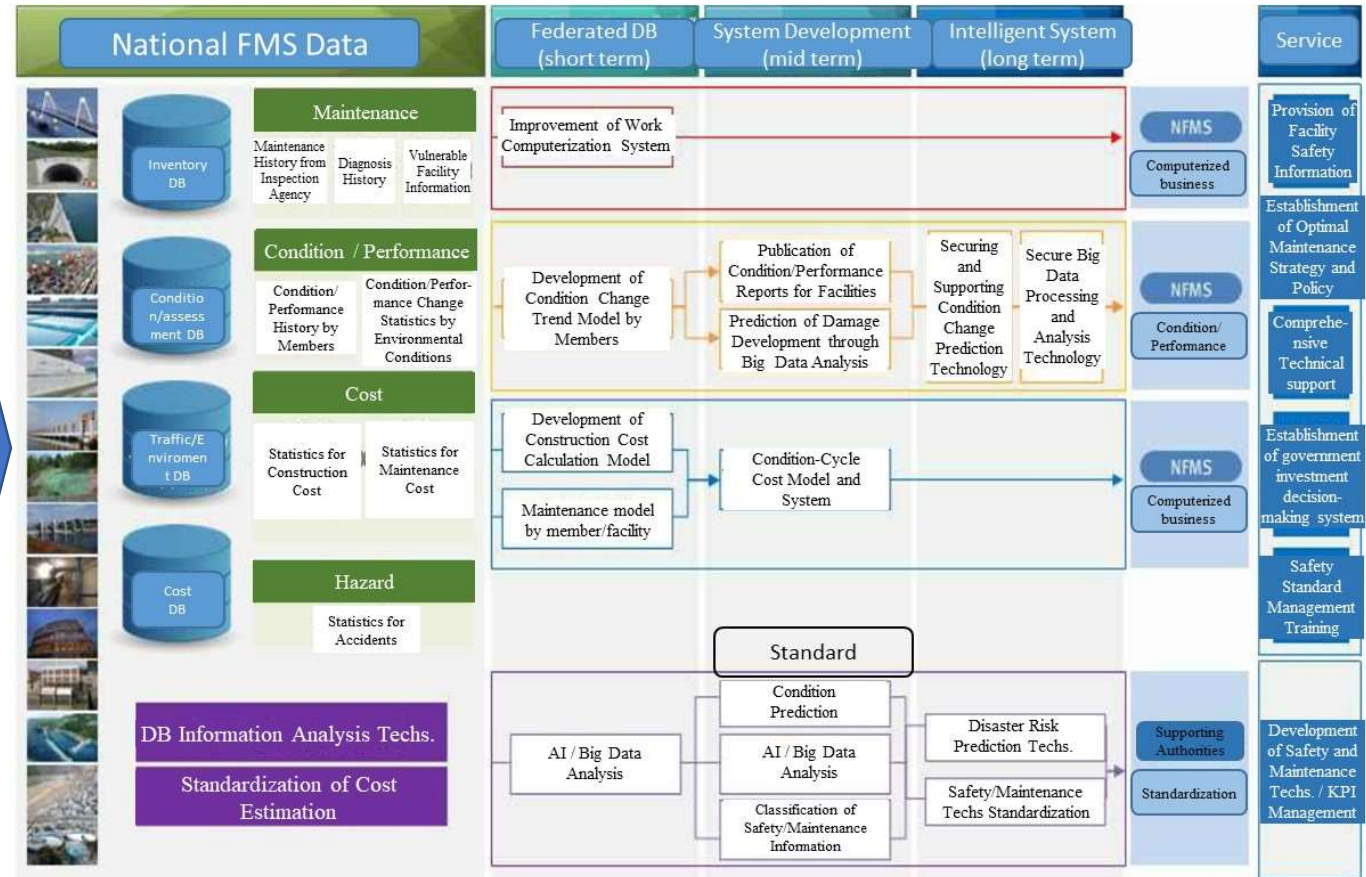
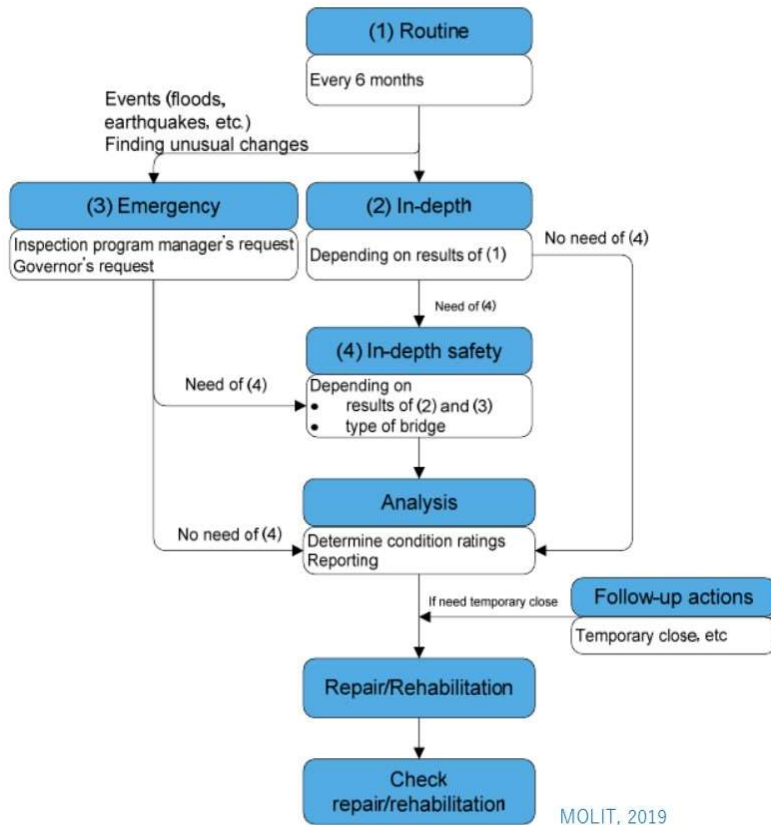
- New Process and Technologies are needed.

S4-G9 도면 및 현장검토를 통한 위치 확인(천공 전)



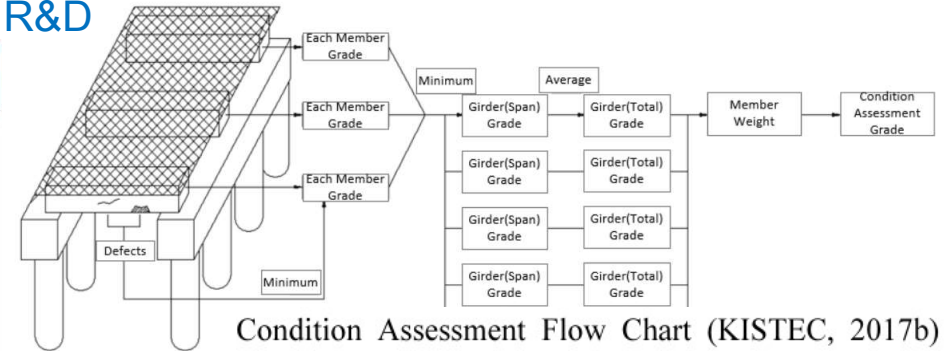
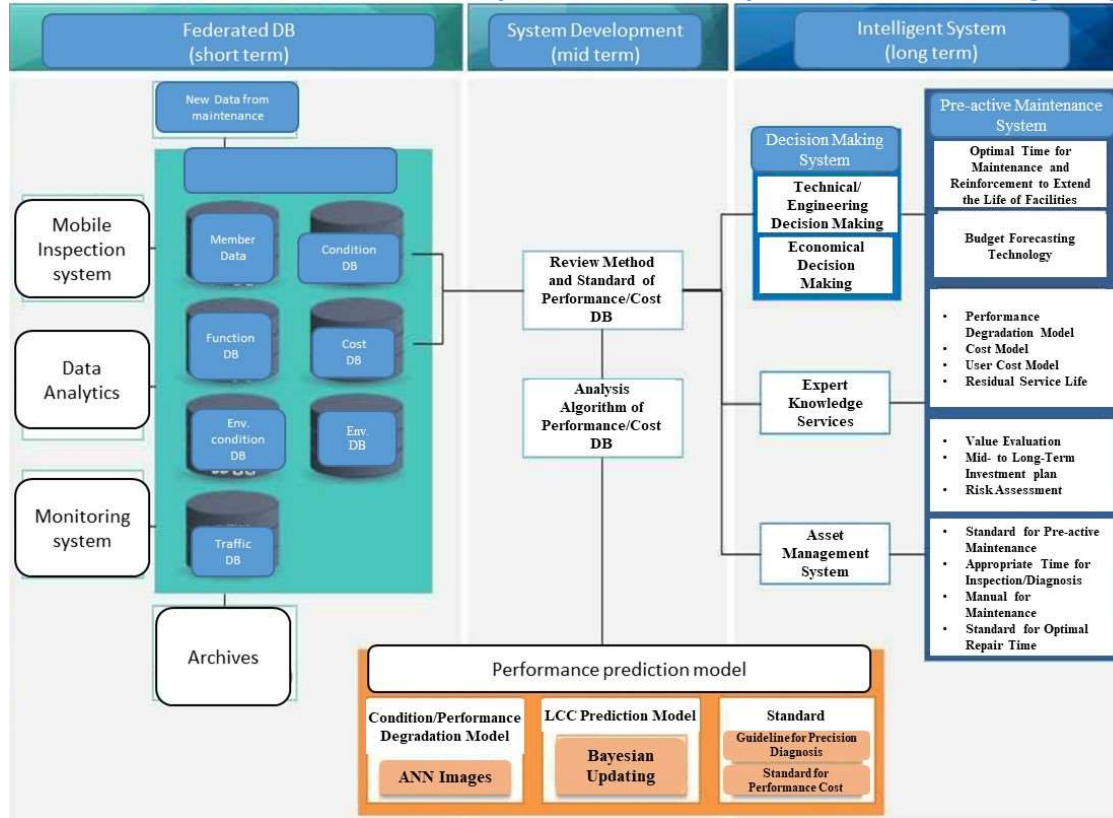
Member-based Data for Bridges

- Visual inspection data : FMS starts to accumulate member-based data

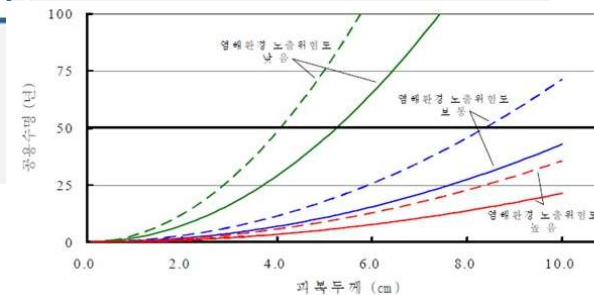
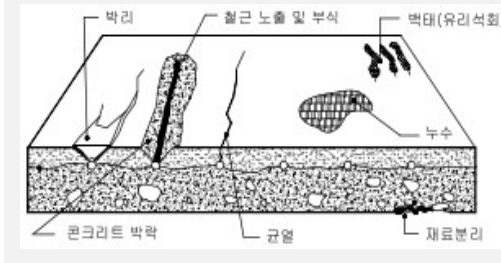


Member-based Data for Bridges

■ Data collection and performance prediction : on-going R&D



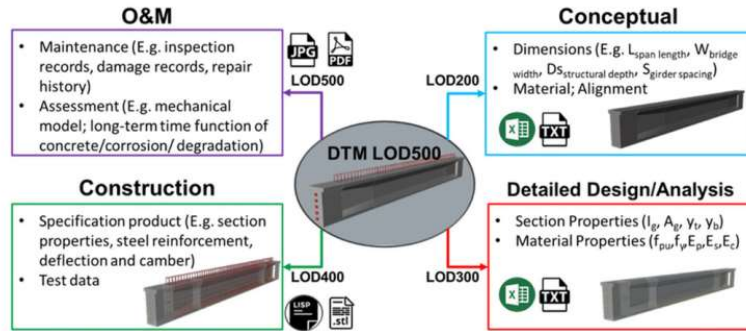
■ Bridge Slab



Deterioration model For prediction

Digitalization of Maintenance task

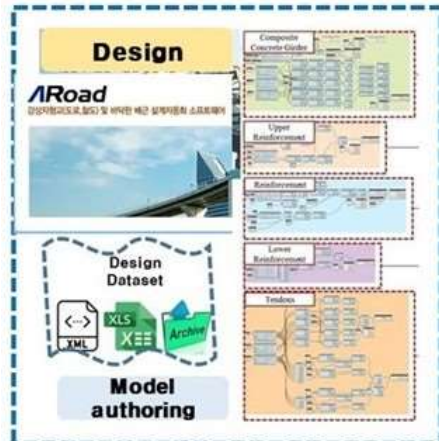
Digitalization of existing maintenance data & bridges



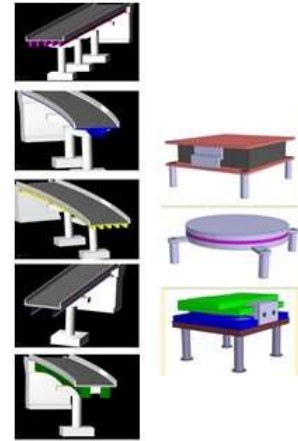
Data labeling
Unique ID

Section ①	Section ②	Section ③	Section ④
①	②	③	④
940	SG04	ITUR	E02D01SD01AS05-161228
Division	Item	Notation	
Section ①	Bridge Identification		
Class 1.	Bridge Identification	940	Corresponding Bridge
Section ②	Inspection Elements		
Class 2.	Structural Member (Part)	SG04	Stiffening Girder #04
Class 3.	Structural Member (Position)	IT	In-Top
Class 4.	Inspection Member	UR	U-shape Rib Member
Section ③	Damage Types		
Class 5.	Member Detail	E02	Element Detail(E02) - Steel Girder
Class 6.	Damage Type	D01	Damage Detail(D01) - Basic Material and Joint Damage
Class 7.	Specific Damage	SD01	Specific Damage(SD01) - Part Cracking
Class 8.	Assessment Standard	AS05	Assessment Standard(AS05) - Overall Cracking in Element
Section ④	Inspection Data		
Class 9.	Inspection Date	161228	Year, Month, Day

Algorithm-based model generation



Data template for BMS model authoring



Automatic generation
of digital models by data

Inspection, NDE, condition, repair history

Member Code: 전체

Thickness of pavement: 열기

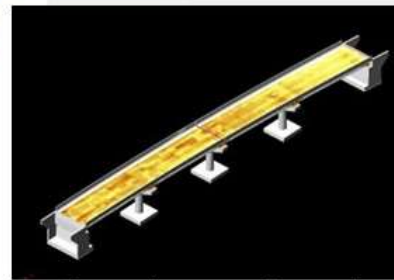
Concrete cover: 열기

Damages of slab: 열기

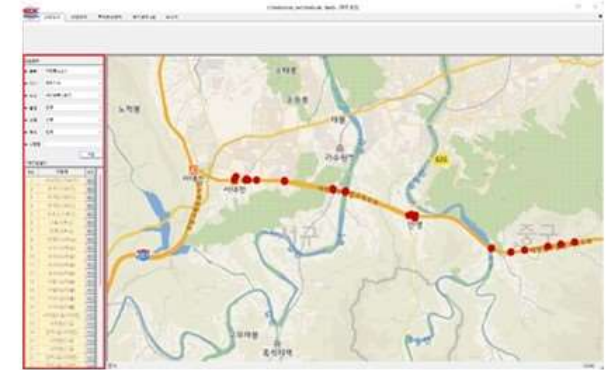
Date: 2021-10-05

Mapping location: 전체

TOP



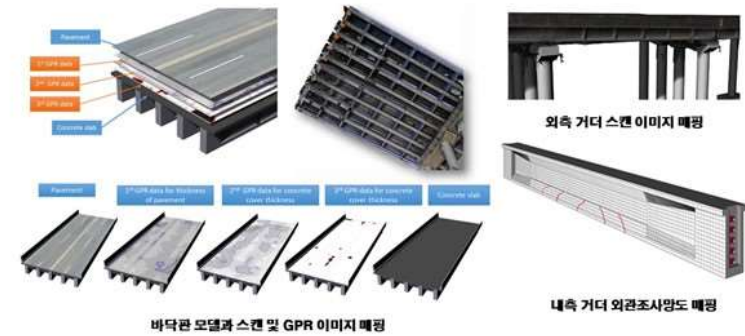
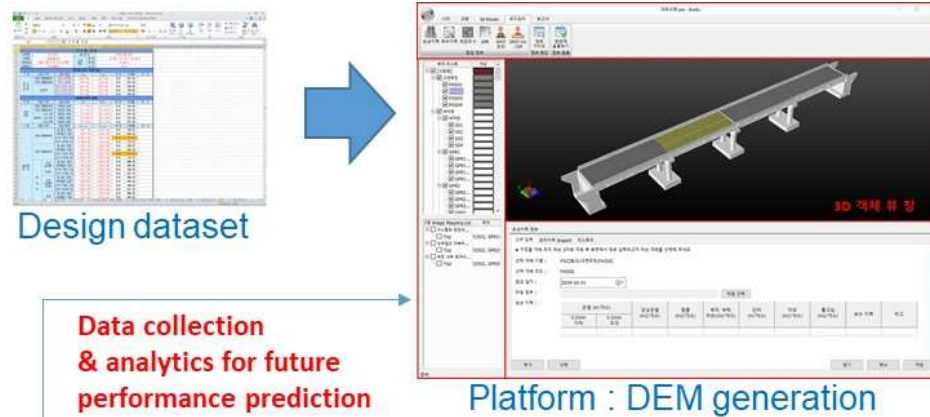
Accumulate maintenance data to the model



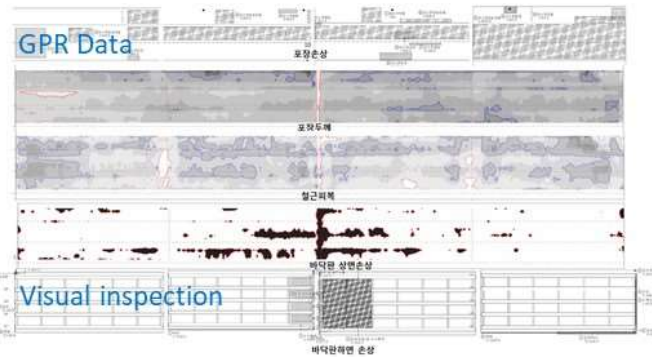
GIS based BMS and Dashboard for bridge owners

Digitalization of Maintenance task

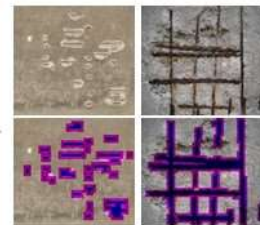
- New BMS for Korea Expressway Corporation



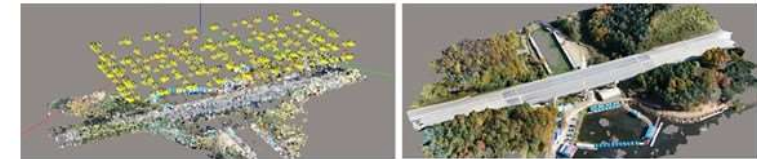
Digital Models for Maintenance



Concrete Slab Twin Model



Damage Data



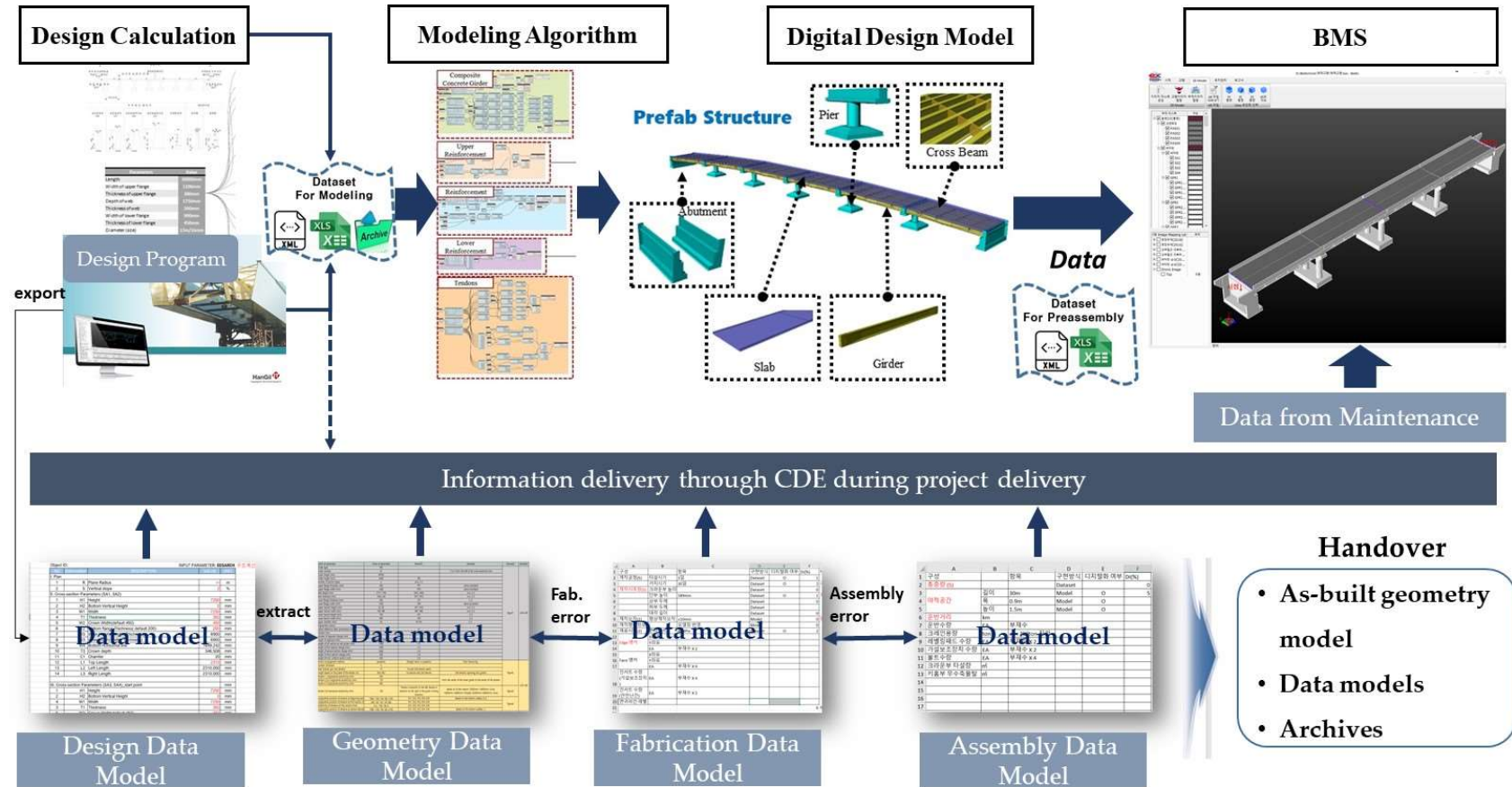
Reality Model by UAV Scanning



Scanned Image DB

Digitalization of Maintenance task

- As-built BIM deliverables for Maintenance : on-going national R&D

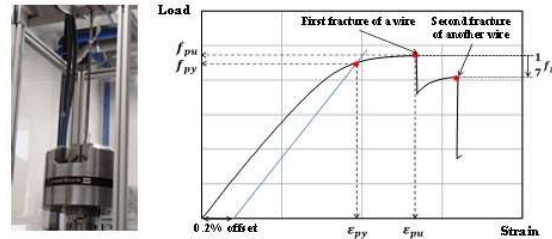


Issues of Bridge Maintenance in Korea

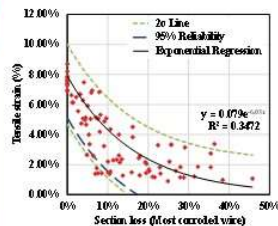
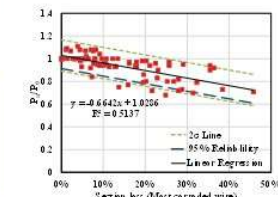
- Invisible deterioration of bridges (new inspection methodology & future prediction data ?)



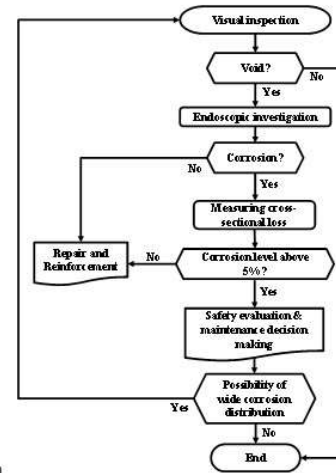
Corrosion cases in Korea



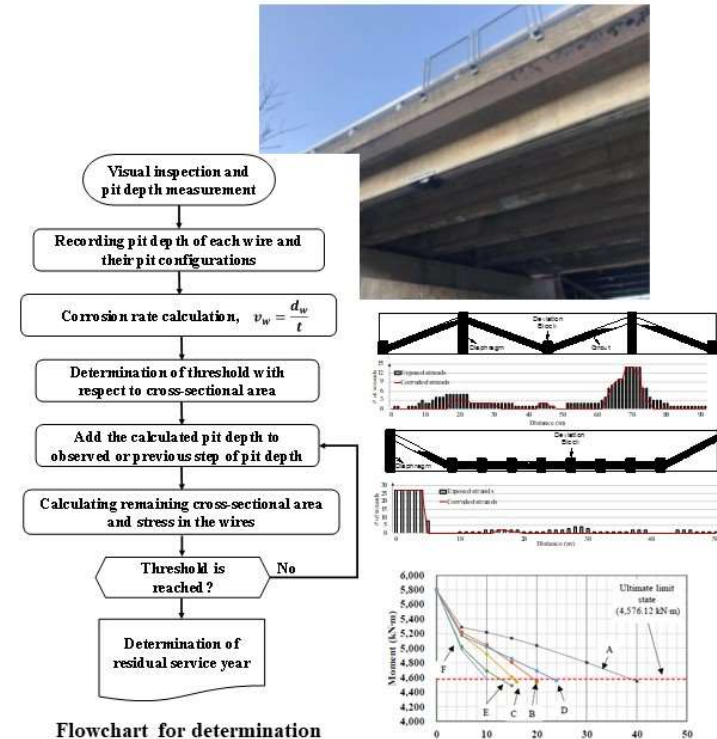
Tensile test of corroded strands



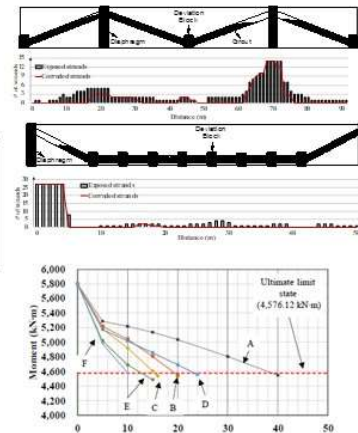
Tensile strength and strain



Corrosion inspection flowchart

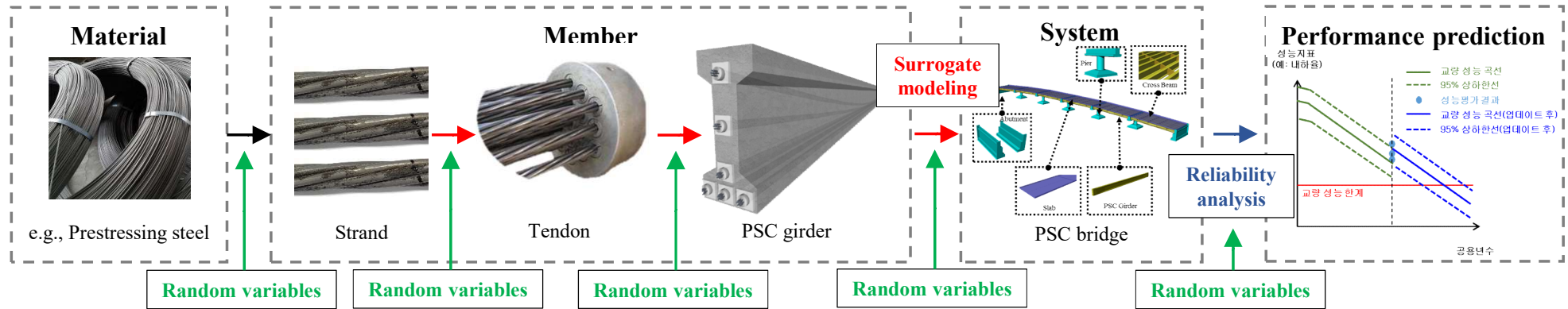


Flowchart for determination of residual service life



Performance prediction based on corrosion scenarios

Issues of Bridge Maintenance in Korea



■ Collaborative Effort

- Bridge owners : allow detail inspection for replaced bridges
- Public agencies for maintenance: digitalization of data and open-data
- Academics: AI-based prediction
- International : IABSE TG 5.6 “BIM for existing structures”

